

AMERICAN GENERAL SINGLE ENGINE AIRCRAFT SERVICE KIT NO. 151

**SUBJECT:**

Throttle cable support bracket replacement.

**PURPOSE/DISCUSSION:**

The purpose of this service kit is to remove the existing throttle cable support bracket assembly and replace it with an improved throttle cable support bracket.

The throttle cable support bracket assembly located on the carburetor air box has been found to wear excessively within a short period of time. This wear could cause the cable to come loose from the bracket and possibly result in loss of throttle control.

**DESCRIPTION:**

This Service Kit contains the parts and instructions required to replace the existing throttle cable support bracket assembly with the improved throttle cable support bracket.

**PARTS REQUIRED:**

PART NUMBER	NOMENCLATURE	QUANTITY
5503016-22	Cable Support Bracket	1
5503009-2	Gasket	1
160-A2	Clamp	1
MT-969	Shim	1
AN3-5A	Bolt	2
AN960-10	Washer	2
MS20365-1032C	Nut	2
MS20426AD3-3	Rivet	4
NAS680A3	Nut Plate	2

**SPECIAL TOOLS/EQUIPMENT REQUIRED:**

Standard aircraft mechanic's tools.

**EFFECTIVITY:**

AG-5B/ Tiger Serial Number 99998 and 10000 thru 10033.

**WEIGHT AND BALANCE:**

The effect of this accessory kit on the aircraft's basic weight and balance will be negligible.

**PRICE:**

N/A

Two hours at normal shop rate may be charged back to American General Aircraft Corporation using standard warranty claim procedures.

**MODIFICATION INSTRUCTIONS:**

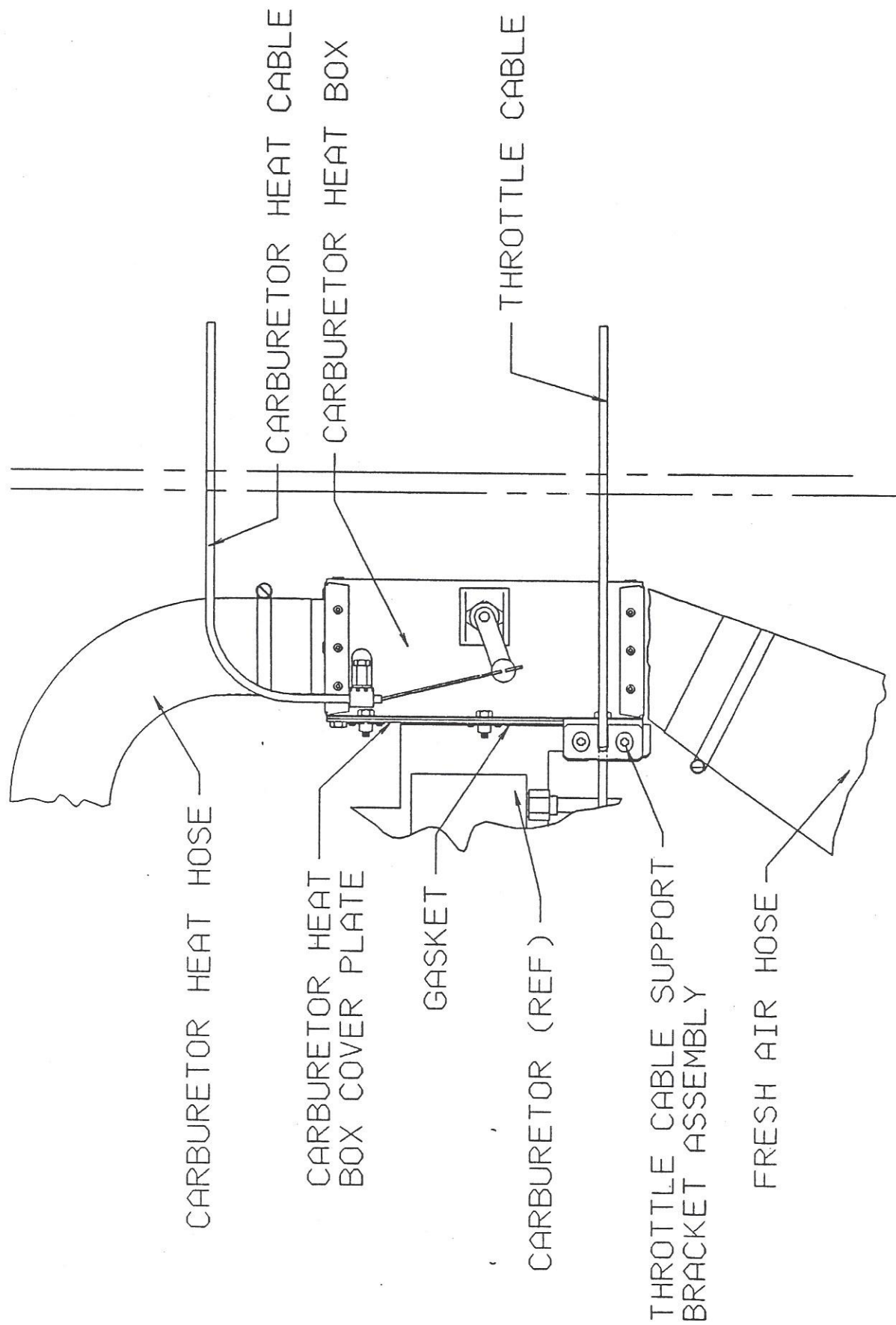
The following instructions in step-by-step format are written as a guide to perform this modification. Compliance with safe maintenance practices as recommended in the Maintenance Manual and FAA regulations is mandatory. Please read all instructions and review all diagrams before starting this modification.

- A. Prepare aircraft for safe maintenance as follows:
  - A-1 Ensure all cockpit switches are off.
  - A-2 Ensure aircraft is grounded and battery is disconnected.
  - A-3 Observe all common aircraft maintenance safety practices.
- B. Replace the throttle cable support bracket assembly with the new cable support bracket as follows:
  - B-1 Remove the carburetor heat cable from the carburetor heat box and retain the hardware (see Figure 1).
  - B-2 Remove the throttle cable from the throttle cable bracket assembly (see Figure 1).
  - B-3 Loosen the hose clamps that attach the fresh air and the carburetor heat hoses to the carburetor heat box and remove the hoses. Remove the eight bolts that attach the carburetor heat box to the cover plate and remove the box from the airplane (see Figure 1).
  - B-4 Remove the four bolts that attach the carburetor heat box cover plate to the carburetor and remove the cover plate and gasket from the airplane (see Figure 1).
  - B-5 Remove the two nutplates located on the left hand side of the carburetor heat box cover plate using a #40 drill bit to remove the rivets (see Figure 2).
  - B-6 Attach the NAS680A3 nutplates and MS20426AD3-3 rivets provided to the carburetor air box as shown in Figure 2.
  - B-7 Install the 5503009-2 Gasket and the carburetor box cover plate on the aircraft using the same bolts that attached it before.
  - B-8 Install the modified carburetor heat box and the 5503016-22 cable support bracket using the original attach bolts as shown in Figure 2.
  - B-9 Reattach the carburetor heat and fresh air hoses and tighten the hose clamps.

- B-10 Reattach the carburetor heat control cable to the carburetor air box.
- B-11 Attach the throttle cable to the cable support bracket using the MT-969 shim, the 160-A2 clamp, two AN3-5A bolts, two AN960-10 washers, and two MS20365-1032C nuts as shown in Figure 2.
- B-12 Run MS20995C32 safety wire around the throttle cable and through the bracket as shown in Figure 2.
- C. Return aircraft to flight status.
- D. Record compliance in the aircraft logbook.
- E. Please fill in the attached compliance card and return it to:

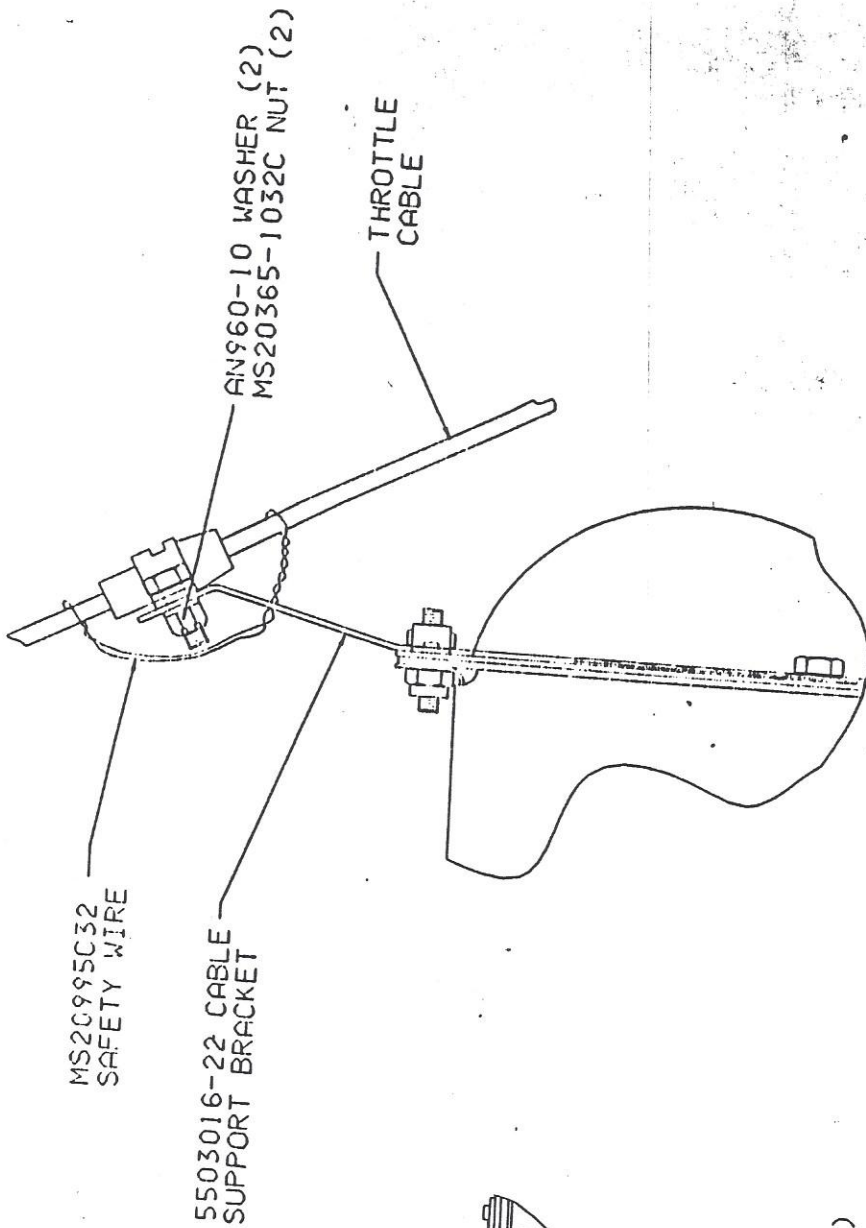
American General Aircraft Corp.  
P.O. Box 5757  
Greenville, MS 38703

FAA (DER) Approval of this Service Kit has been granted.

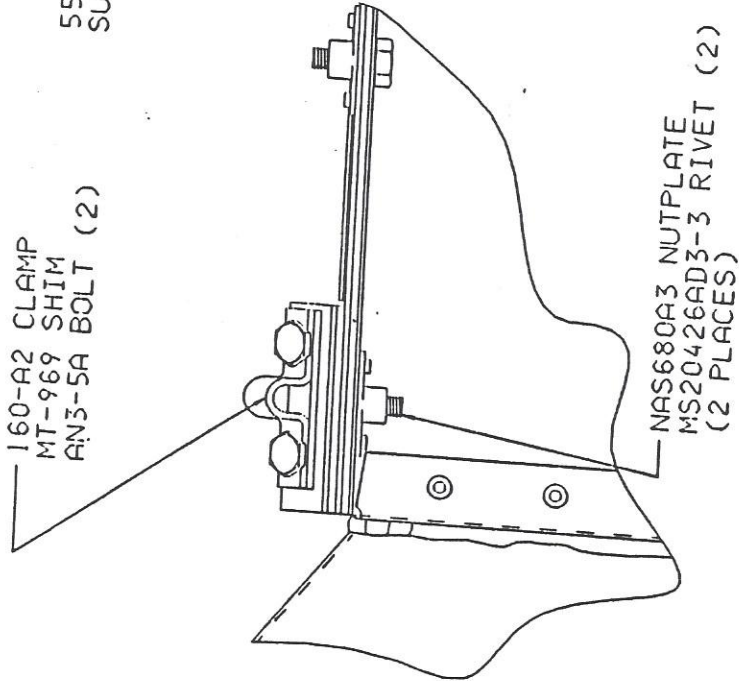


FUS STA  
 50.000 (REF)

FIGURE 1



VIEW FROM RIGHT SIDE



VIEW FROM ABOVE  
THROTTLE CABLE DELETED  
FOR CLARITY

FIGURE 2