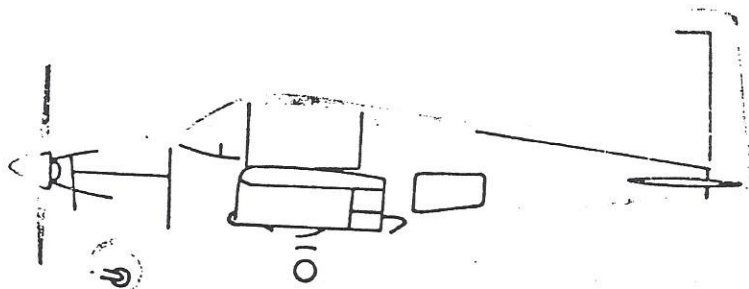
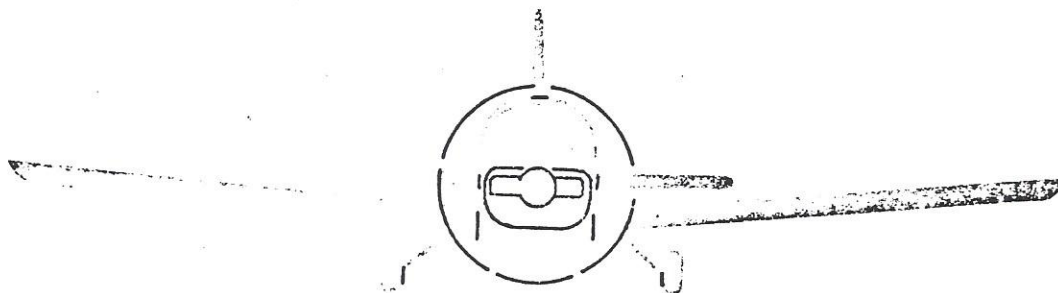


SINGLE ENGINE AIRCRAFT SERVICE KIT NO. 147

SUBJECT: LIGHTS (ATA NO. 33) FLASHER UNIT, BEACON,
INSTALLATION OF



NOTED BY	
NAME	DATE

February 28, 1979



Gulfstream American

GULFSTREAM AMERICAN SINGLE ENGINE AIRCRAFT SERVICE KIT NO. 147

SUBJECT: Lights (ATA No. 33) Flasher Unit, Beacon, Installation of

PURPOSE/DISCUSSION: The purpose of this Aircraft Service Kit is to install an improved flasher unit on all models when the following flasher units are no longer available: SID, SIDA, 804001-901 and A1EB.

DESCRIPTION: This kit consists of an improved Flasher Unit Assembly 5804058-501, mounting bracket, hardware and wiring.

SPECIAL TOOLS
/EQUIPMENT REQUIRED: None.

EFFECTIVITY:	<u>MODEL</u>	<u>SERIAL NUMBER</u>
	AA1	0001 and Subsequent
	AA1A	0001 and Subsequent
	AA1B	0001 and Subsequent
	AA1C	0001 and Subsequent
	AA5	0001 and Subsequent
	AA5A	0001 through 0651
	AA5B	0001 through 0868

WEIGHT AND BALANCE DATA:	<u>WEIGHT</u>	<u>ARM</u>	<u>MOMENT</u>
	NEGLIGIBLE		

THIS IS A DESIGN IMPROVEMENT. NO PARTS OR LABOR CREDIT WILL BE GIVEN.

PRICE: Prices are subject to change without notice:

<u>Kit 1</u>	<u>Kit 2</u>
\$ 83.95	\$ 73.42

The following instructions, in step by step form, are written as a guide to perform this installation or modification. Compliance with safe maintenance practices as recommended in the Maintenance Manual and FAA regulations is mandatory.

FAA (DER) approval of this Service Kit has been granted.

GULFSTREAM AMERICAN SINGLE ENGINE AIRCRAFT SERVICE KIT NO. 147

MODIFICATION INSTRUCTIONS:

- A. Prepare the aircraft for safe maintenance as follows:
 - A-1 Insure that Ignition Switch is OFF.
 - A-2 Insure that Master Switch is OFF.
 - A-3 Aircraft grounded.
- B. Removal Instructions (All Models):
 - B-1 Gain access to the flasher unit by removing the left hand empennage inspection cover. Retain the cover and hardware.
 - B-2 Disconnect wiring from existing flasher unit. Remove flasher unit and discard. See Figures 3 and 4.
 - B-3 On AA1A aircraft serial numbers 0435 through 0470, retain the 480303-0 Socket Housing. See Figure 3.
- C. Rework aircraft structure as follows (All Models):
 - C-1 Drill (4) .193 diameter holes as shown in Figure 1. The bracket on the 5804058-501 Flasher Unit Assembly may be used as a template.
- D. Installation Instructions (AA1 and AA1A serial numbers 0001 through 0434):
 - D-1 Install 5804058-501 Flasher Unit Assembly using MS35206-245 Screws (4) and AN960-8 Washers (4) as shown in Figures 1 and 2.
 - D-2 Install ASK 147-1 Wire Bundle as shown in Figure 5. Connect wire 51LF3 from bundle to existing 1LF3 using a GS805A2 Splice. Connect wire 51LF4 to existing 1LF4 using a GS805A2 Splice and 51LF5 to existing 1LF5 using a GS805A2 Splice. (Wires 1LF4 and 1LF5 go to existing beacon assembly.) See Figure 5.
 - D-3 Install 5804057-703 Wire Harness. Connect connector, with 51LF12 Wire, 51LF13 Wire and 51LF11 Wire (to ground) installed, to ASK 147-1 Wire Bundle. Connect 1-480303-0 Housing to connect with 51LF14 and 51LF10 Wires installed. Connect connector from 5804058-501 Flasher to connector with 51LF12 Wire, 51LF13 Wire and 51LF14 Wire. See Figure 5.
 - D-4 At point where old unit was grounded, insure that ground point is clean (burnish if necessary). Connect wires 51LF11, 51LF10 and black wire (from flasher unit) to ground point. See Figure 5.
 - D-5 Proceed to Step I for operational check.

GULFSTREAM AMERICAN SINGLE ENGINE AIRCRAFT SERVICE KIT NO. 147

E. Installation Instructions (AA1A serial numbers 0435 through 0470):

- E-1 Install 5804068-501 Flasher Unit Assembly using MS35206-245 Screws (4) and AN960-8 Washers (4) as shown in Figure 1 and 2.
- E-2 Install 5804057-703 Wire Harness. Connect connector with 51LF12 Wire, 51LF13 Wire and 51LF11 Wire (to ground) installed, to existing connector with 1LF3, 1LF4 and 1LF5 Wires installed. Connect 480303-0 Housing (retained in Step B-3) to connector with 51LF14 and 51LF10 Wires installed. Connect connector from 5804058-501 Flasher to connector with 51LF12 Wire, 51LF13 Wire and 51LF14 Wire installed. See Figure 5.
- E-3 At point where old unit was grounded, insure that ground point is clean (bur-nish if necessary). Connect wires 51LF11, 51LF10 and black wire (from flasher unit) to ground point. See Figure 5.
- E-4 Proceed to Step I for operational check.

F. Installation Instructions (AA1B and AA1C Aircraft):

- F-1 Install 5804058-501 Flasher Unit Assembly using MS35206-245 Screws (4) and AN960D8 Washers (4) as shown in Figures 1 and 2.
- F-2 Install 5804057-703 Wire Harness. Connect connector, with 51LF12 Wire, 51LF13 Wire and 51LF11 Wire (to ground) installed, to existing connector with 1LF8, 1LF4 and 1LF5 Wires installed. Connect connector with wires 51LF14 51LF10 installed, to existing connector (to existing load resistor) with 51LF8 and 51LF9 Wires installed. Connect connector from 5804058 Flasher Unit to connector with 51LF12 Wire, 51LF13 Wire and 51LD14 Wire installed. See Figure 5.
- F-3 At point where old unit was grounded, insure that ground point is clean (bur-nish if necessary). Connect wires 51LF11, 51LF10 and black wire (from flasher unit) to ground point. See Figure 5.
- F-4 Proceed to Step I for operational check.

G. Installation Instructions (AA5 serial numbers 0001 through 0102):

- G-1 Install 5804058 Flasher Unit Assembly using MS35206-245 Screws (4) and AN960-D8 Washers (4) as shown in Figure 1 and Figure 2.
- G-2 Install ASK 147-1 Wire Bundle Assembly as shown in Figure 5. Connect wire 51LF3 from bundle to existing 5LF3 Wire using GS805A2 Splice. Connect wire 51LF4 to existing 5LF4 Wire using GS805A2 Splice. Connect wire 51LF5 to existing 5LF5 Wire using GS805A2 Splice. See Figure 5.
- G-3 Install 5804057-703 Wire Harness. Connect connector, with 51LF12 Wire, 51LF13 Wire and 51LF11 Wire (to ground) installed to ASK 147-1 Wire Bundle. Connect 480303-0 Housing to connector with 51LF14 and 51LF10 Wires installed. Connect connector from 5804058-501 Flasher Unit to connector with 51LF12 Wire, 51LF13 Wire and 51LF14 Wire. See Figure 5.

GULFSTREAM AMERICAN SINGLE ENGINE AIRCRAFT SERVICE KIT NO. 147

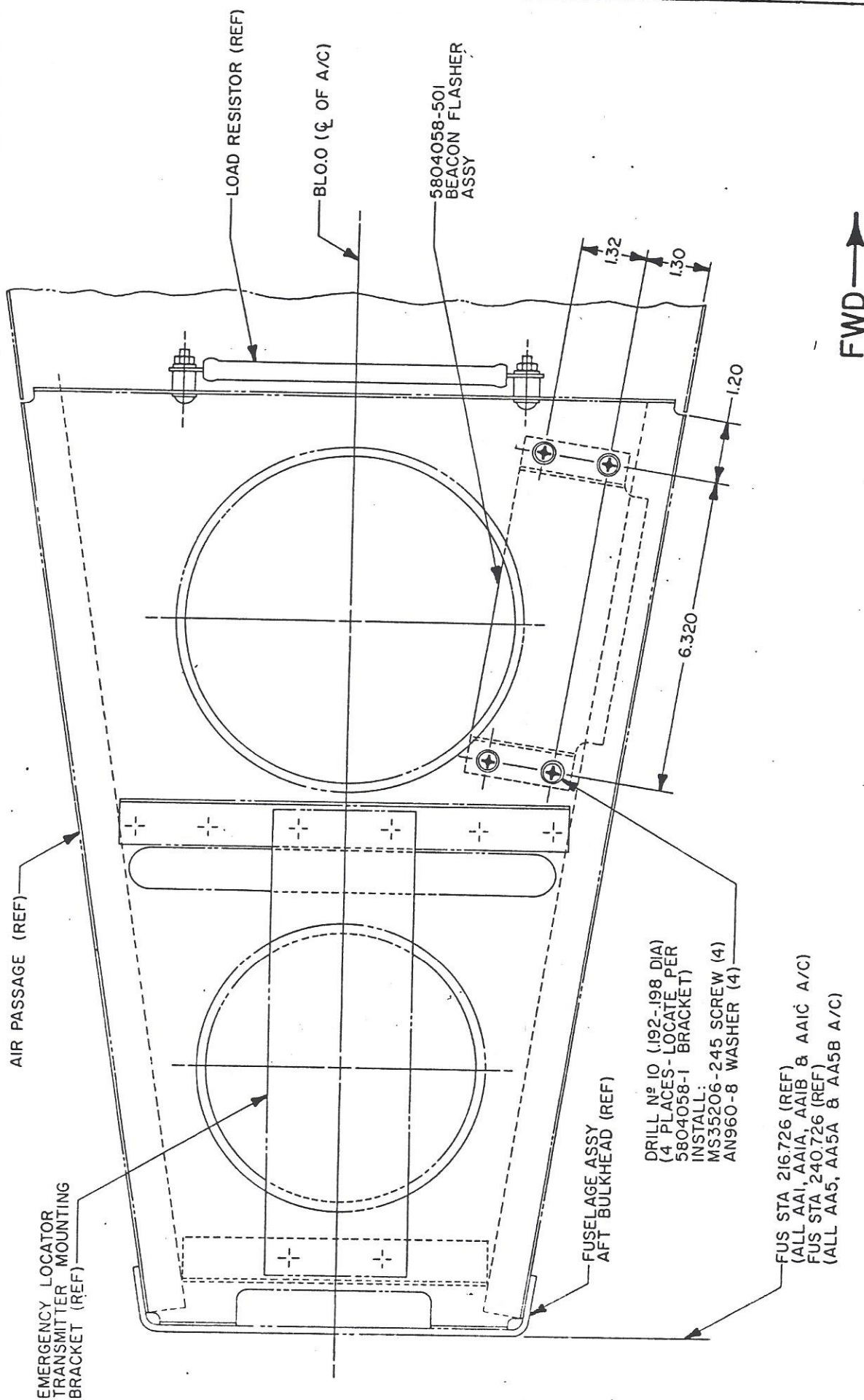
- G-4 At point where old unit was grounded, insure that the ground point is clean (burnish is necessary). Connect wires 51LF11, 51LF10 and black wire (from flasher unit) to ground point. See Figure 5.
- G-5 Proceed to Step I for operational check.
- H. Installation Instructions (AA5 103-0834,AA5A 0001-0651 AND AA5B 0001-0868.)
 - H-1 Install 580458-501 Flasher Unit Assembly using MS35206-245 Screws (4) and AN960-8 Washers (4) as shown in Figures 1 and 2.
 - H-2 Install 5804057-703 Wire Harness. Connect connector, with 51LF12 Wire, 51LF13 Wire and 51LF11 Wire (to ground) installed, to existing connector (from beacon assembly) with wires 5LF3, 5LF4 and 5LF5 installed. Connect connector with 51LF14 and 51LF10 Wires installed to existing connector (from load resistor) with 5LF8 and 5LF9 Wires installed. Connect connector from 5904058-501 Flasher Unit to connector with 51LF12, 51LF13 and 51LF14 Wires installed. See Figure 5.
 - H-3 At point where old unit was grounded, insure that the ground point is clean (burnish if necessary). Connect wires 51LF11, 51FL10 and black wire (from flasher unit) to ground point. See Figure 5.
- I. Operational Check:
 - I-1 Turn master switch ON. Turn beacon switch ON. Check to see that beacon is operational.
 - I-2 If check is satisfactory, turn beacon and master switches OFF.
- J. Reinstall inspection cover removed in Step B-1.
- K. Return the aircraft to flight status.

PARTS REQUIRED PER AIRCRAFT:

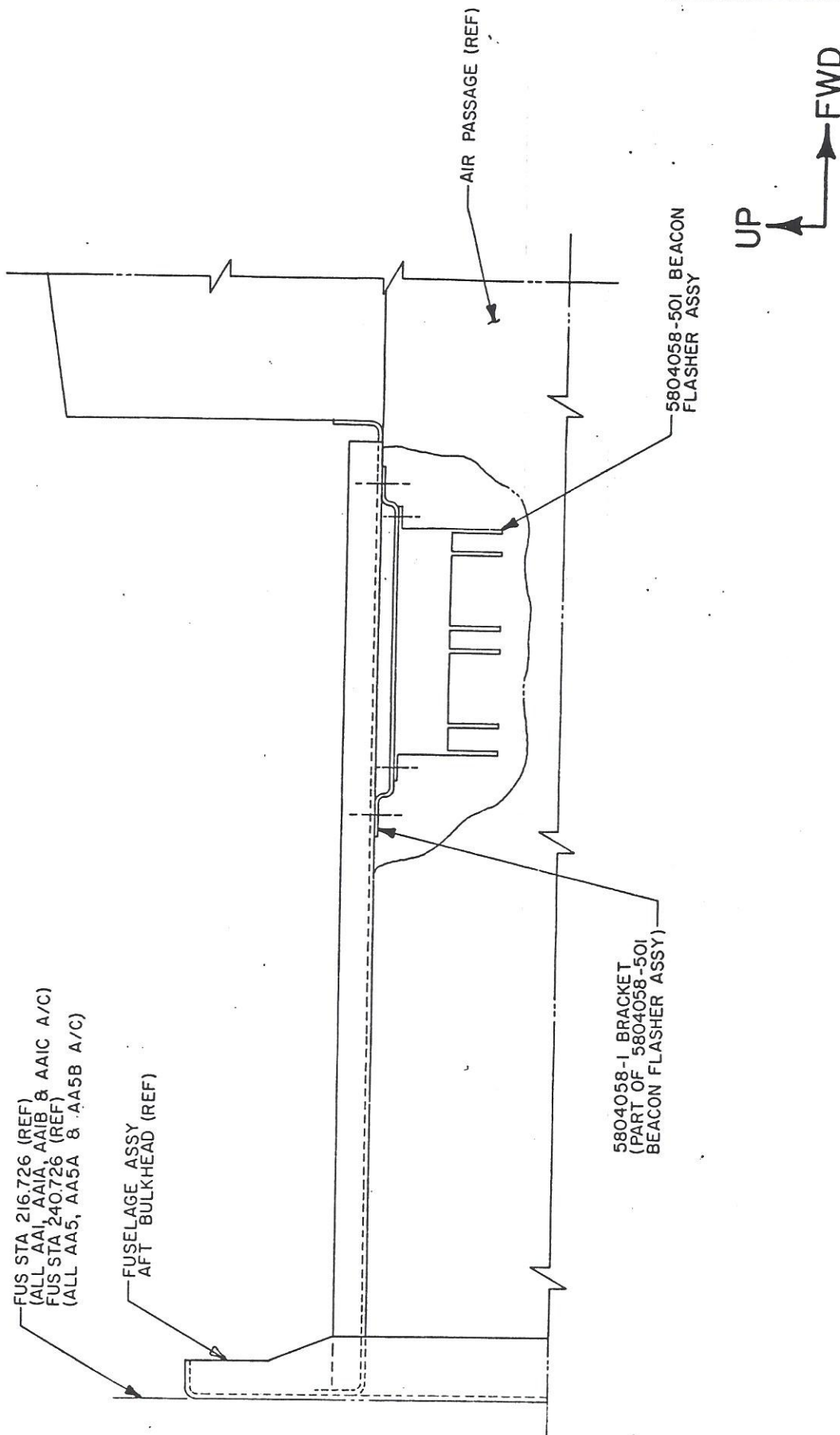
<u>Part Number</u>	<u>Nomenclature</u>	<u>Kit 1*</u> <u>Quantity</u>	<u>Kit 2**</u> <u>Quantity</u>
5804058-501	Beacon Flasher Assembly	1	1
MS35206-245	Screw	4	4
AN960-8	Washer	4	4
480303-0	Connector	1	-
ASK 147-1	Wire Bundle Assembly	1	-
TY23M	Ty-Rap	2	2
GS805A2	Splice	3	-
5804057-703	Wire Harness Assembly	1	1

* Kit 1 is for all AA1 Aircraft, AA1A Aircraft 0001 - 0434 and AA5 Aircraft 0001-0102.

** Kit 2 is for AA1A Aircraft 0435 - 0470, all AA1B, all AA1C, AA5 Aircraft 0103 - 0834, all AA5A and AA5B.



VIEW LOOKING DOWN



VIEW LOOKING INBOARD FROM RHS

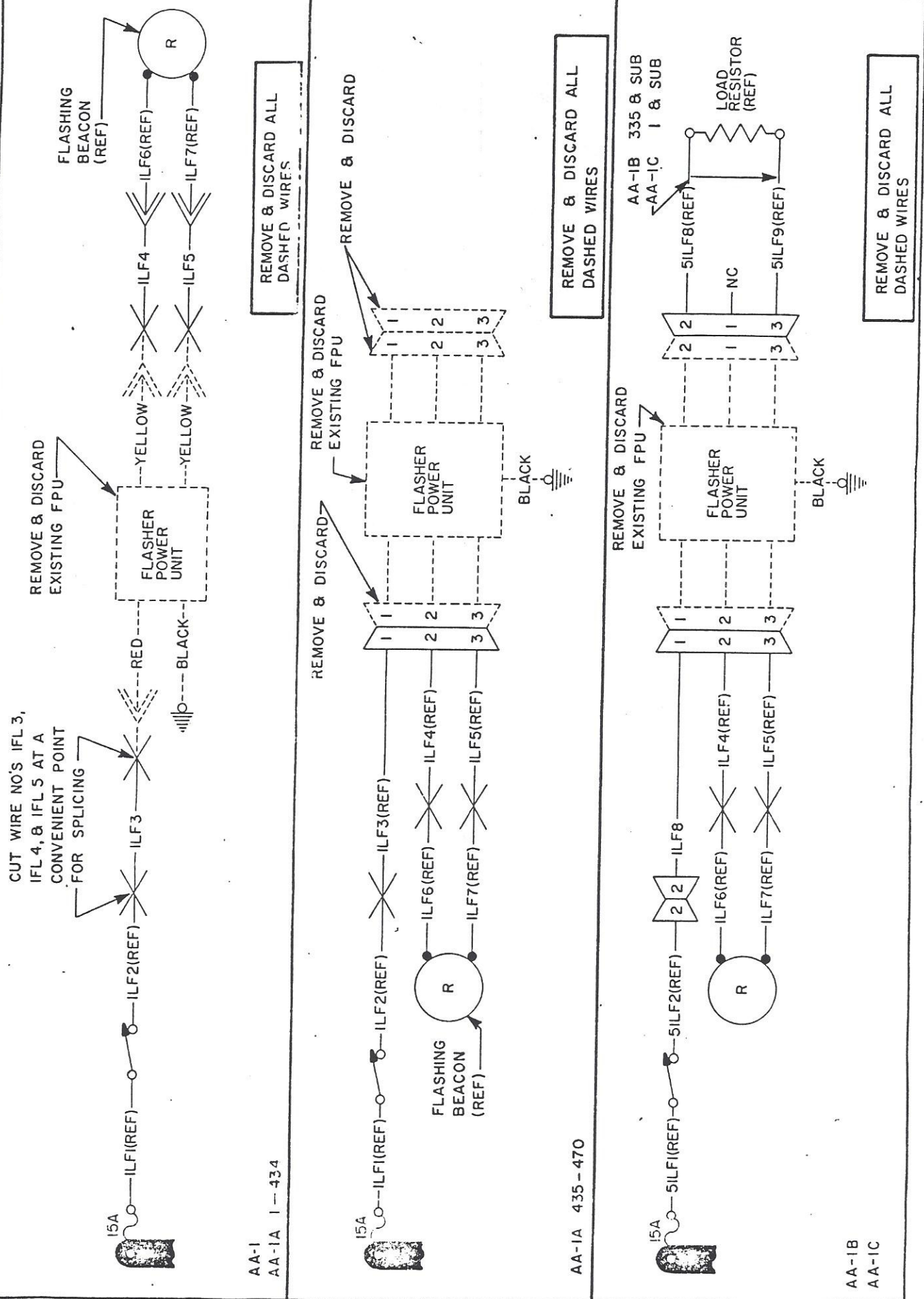
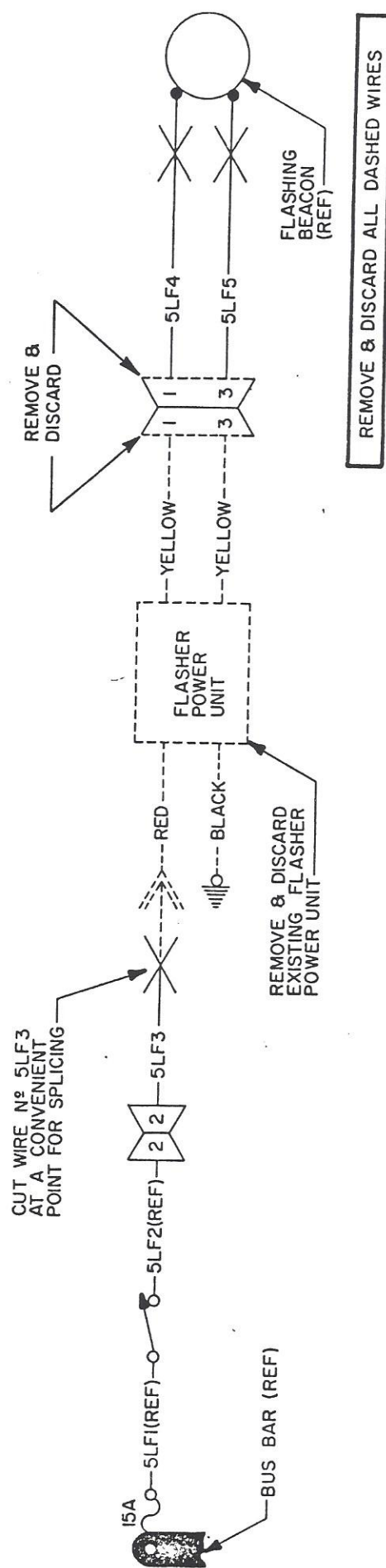
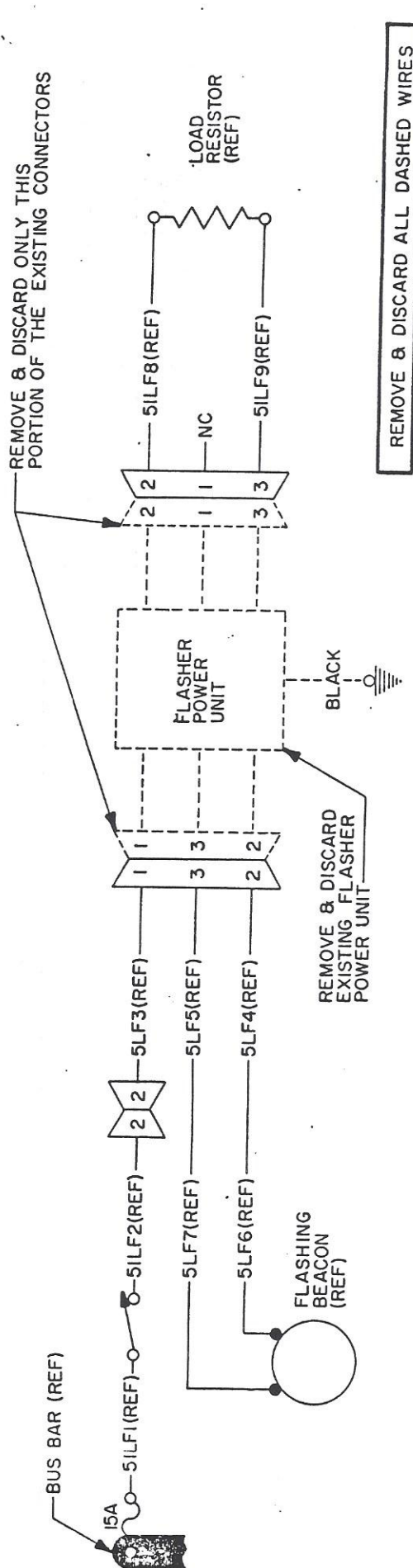


FIGURE 3



AA-5 0001-0102

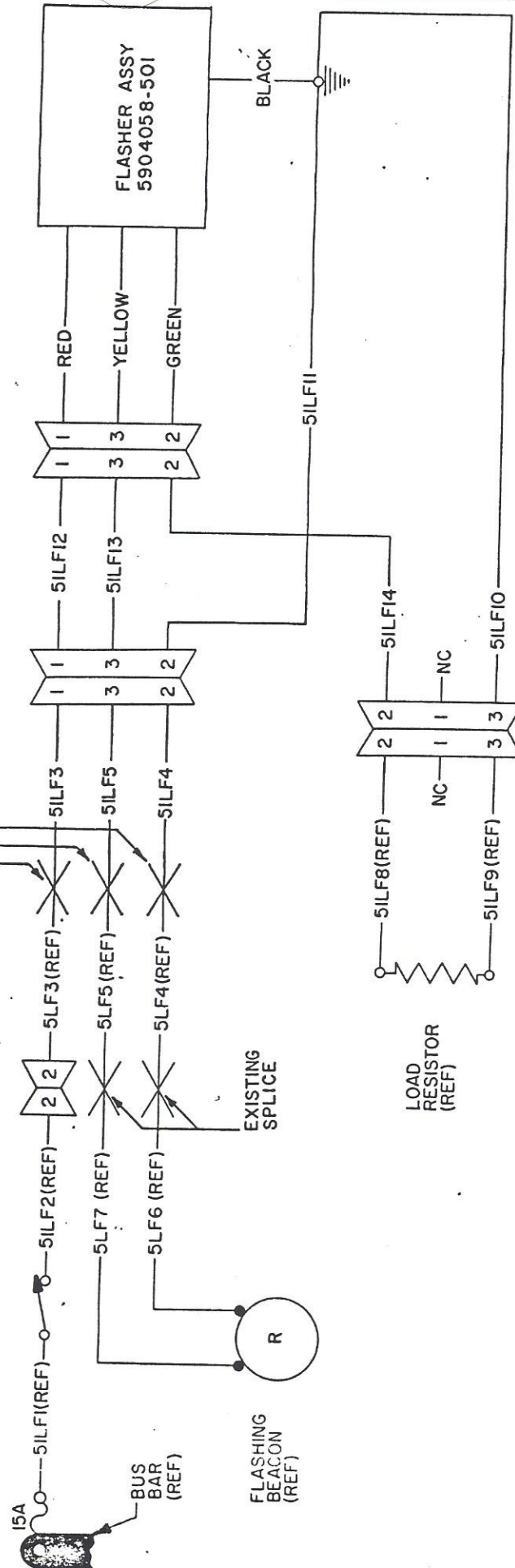


AA-5 0103-0834
AA-5A 0001-0651
AA-5B 0001-0760,762-0868

NOTE

ILF8 SAME AS 5LF3
ILF3 SAME AS 5LF3
ILF4 SAME AS 5LF4
ILF5 SAME AS 5LF4

SPLICE WIRE 5ILF3 TO 5LF3
SPLICE WIRE 5ILF5 TO 5LF5
SPLICE WIRE 5ILF4 TO 5LF4



WIRING DIAGRAM