



American General Aircraft Corporation

AMERICAN GENERAL AIRCRAFT ACCESSORY KIT NO. AK-142

SUBJECT: Installation of Auxillary Power Plug on AG-5B Tiger aircraft.

PURPOSE/DISCUSSION: This kit allows the installation of an optional Auxillary Power Receptical on AG-5B aircraft.

DESCRIPTION: This accessory kit contains the instructions and parts required to install an Auxillary Power Receptical on AG-5B Tiger aircraft.

**SPECIAL TOOLS/
EQUIPMENT REQUIRED:** Standard aircraft mechanics tools.

EFFECTIVITY: AG-5B Tiger s/n 10000 through 10030 (SECTION A).
AG-5B Tiger s/n 10031 and up (SECTION B).

WEIGHT AND BALANCE: WEIGHT ARM MOMENT

The effect of this accessory kit on the aircraft's basic weight and balance will be negligible.

PRICE: Prices are subject to change without notice:

T.B.D.

THIS IS AN OPTIONAL MODIFICATION. NO PARTS OR LABOR CREDIT WILL BE GIVEN.

SECTION A

PARTS REQUIRED: (SECTION A)	PART NUMBER	NOMENCLATURE	QUANTITY
	804023-5	Bracket	1
	804023-513	Door Assy	1
	804023-7	Doubler	1
	AN2552-3A	Receptical	1
	AN960-10	Washer	12
	MS20365-1032	Nut	6

MS20426AD3-5	Rivet	3
MS24693-S273	Screw	2
MS24693-S275	Screw	2
MS24694-S52	Screw	2
MS25171-3S	Nipple	1
A3235-028-24A	Washer	4
AN960-616	Washer	4
4508-1	7.0" Strip Foam Tape	2
1691-0410	Rivet	11
EP37A6	Wire	1
EP37A6N	Wire	1

MODIFICATION INSTRUCTIONS (SECTION A):

The following instructions in step-by-step format are written as a guide to perform this modification. Compliance with safe maintenance practices as recommended in the Maintenance Manual and FAA regulations is mandatory. Please read all instructions and review all diagrams before starting this modification.

- A. Prepare aircraft for safe maintenance as follows:
- A-1 Ensure all cockpit switches are off.
 - A-2 Ensure aircraft is grounded and battery is disconnected.
 - A-3 Observe all common aircraft maintenance safety practices.
- B. Install the auxillary power receptacle as follows:
- B-1 Remove the battery from the aircraft by removing the attaching nuts and lifting the battery out of the aircraft.
 - B-2 Locate the 804023-5 bracket on the top of the battery tray as shown in Figure 1 and match drill the tray. Remove the bracket and open the holes in the tray to .450 diameter.
 - B-3 Mark the cutout on the cowl shown in Figure 2 using a grease pencil or other suitable marking device. Carefully cut out the area. When the cutout has been completed seal the exposed edges of carbon fiber with resin.
 - B-4 Position the 804023-7 doubler as shown in Figure 2 and drill 10 holes through the cowl and doubler for the 1691-0410 rivets called out using a #30 drill bit.
 - B-5 Coat doubler in all places that it will contact cowl with resin. Install doubler using 11 1691-0410 rivets that are also coated with resin.
 - B-6 Locate 804023-513 door assembly per Figure 2 and drill three holes through cowl and doubler to match the hinge. Install the door using three resin coated MS20426AD3-5 rivets.
 - B-7 Attach the AN2552-3A receptacle to the 804023-5 bracket using the hardware called

out in Figure 1. Attach the 4508-1 tape strips to the top of the battery tray to cover the screws and washers.

- B-8 Attach the 804023-5 bracket to the bottom of the battery tray as shown in Figure 1. Reattach the battery tray to the firewall.
- B-9 Wire the plug as shown in Figure 1. The MS25171-3S nipple should be installed so that it covers the positive terminal on the AN2552-3A receptical.
- C. Return aircraft to flight status.
- D. Record modification in the aircraft logbook.
- E. Please fill in the attached accessory kit completion card and return it to:
American General Aircraft Corp.
P.O. Box 5757
Greenville, MS 38703

SECTION B

<u>PARTS REQUIRED:</u> <u>(SECTION B)</u>	<u>PART NUMBER</u>	<u>NOMENCLATURE</u>	<u>QUANTITY</u>
	804023-3	Bracket	1
	804023-513	Door Assy	1
	804023-7	Doubler	1
	AN2552-3A	Receptical	1
	AN960-10	Washer	6
	MS20365-1032	Nut	6
	MS20426AD3-5	Rivet	3
	MS24693-S273	Screw	4
	MS24693-S275	Screw	2
	MS25171-3S	Nipple	1
	A3235-028-24A	Washer	4
	AN960-616	Washer	4
	4508-1	7.0" Strip Foam Tape	2
	1691-0410	Rivet	11
	EP37A6	Wire	1
	EP37A6N	Wire	1

MODIFICATION INSTRUCTIONS (SECTION B):

The following instructions in step-by-step format are written as a guide to perform this modification. Compliance with safe maintenance practices as recommended in the Maintenance Manual and FAA regulations is mandatory. Please read all instructions and review all diagrams before starting this modification.

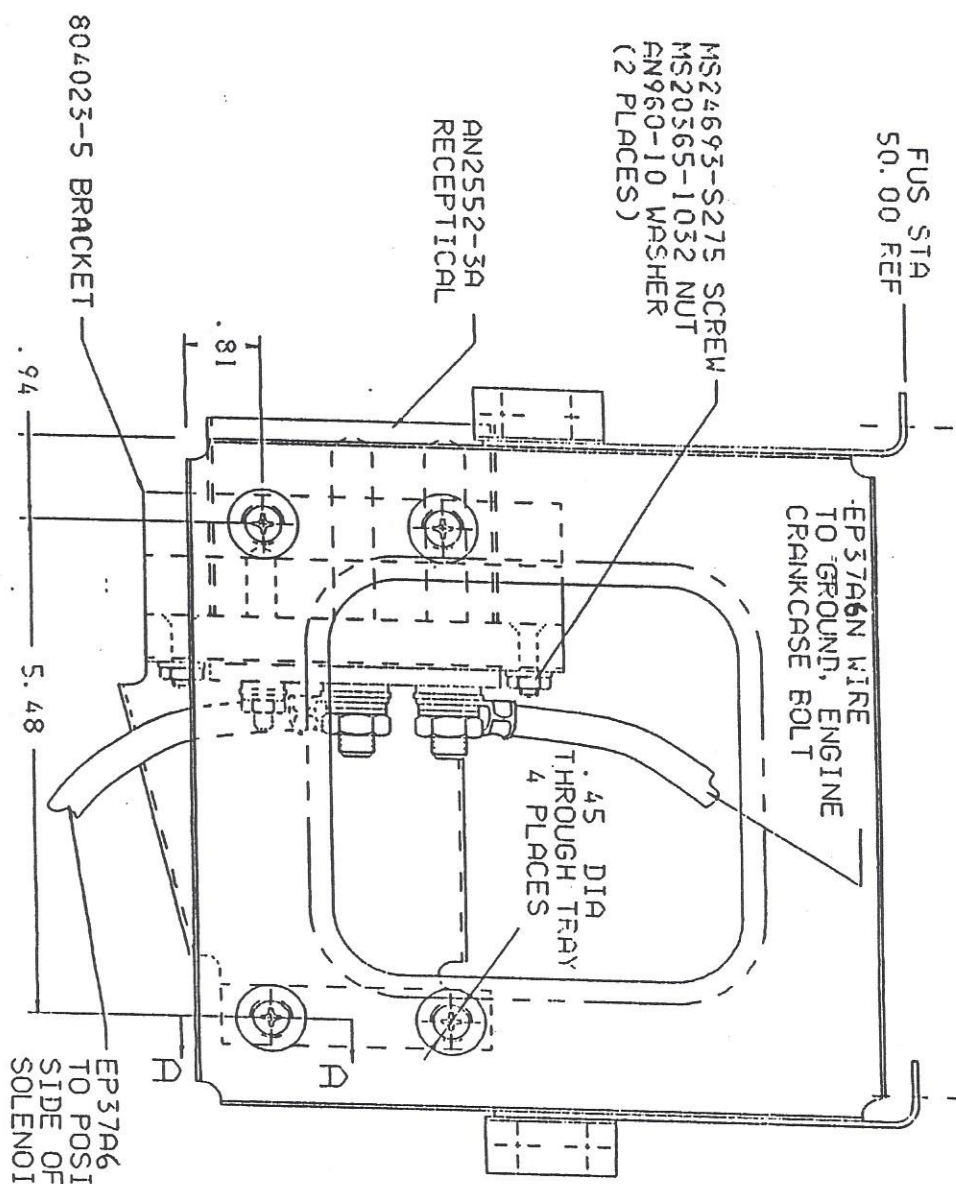
- A. Prepare aircraft for safe maintenance as follows:

- A-1 Ensure all cockpit switches are off.
 - A-2 Ensure aircraft is grounded and battery is disconnected.
 - A-3 Observe all common aircraft maintenance safety practices.
- B. Install the auxillary power receptacle as follows:
- B-1 Remove the battery from the aircraft by removing the attaching nuts and lifting the battery out of the aircraft.
 - B-2 Locate the 804023-3 bracket on the top of the battery tray as shown in Figure 3 and match drill the tray. Remove the bracket and open the holes in the tray to .450 diameter.
 - B-3 Mark the cutout on the cowl shown in Figure 2 using a grease pencil or other suitable marking device. Carefully cut out the area. When the cutout has been completed seal the exposed edges of carbon fiber with resin.
 - B-4 Position the 804023-7 doubler as shown in Figure 2 and drill 10 holes through the cowl and doubler for the 1691-0410 rivets called out using a #30 drill bit.
 - B-5 Coat doubler in all places that it will contact cowl with resin. Install doubler using 11 1691-0410 rivets that are also coated with resin.
 - B-6 Locate 804023-513 door assembly per Figure 2 and drill three holes through cowl and doubler to match the hinge. Install the door using three resin coated MS20426AD3-5 rivets.
 - B-7 Attach the AN2552-3A recepticle to the 804023-3 bracket using the hardware called out in Figure 3. Attach the 4508-1 tape strips to the top of the battery tray to cover the screws and washers.
 - B-8 Attach the 804023-3 bracket to the bottom of the battery tray as shown in Figure 3. Reattach the battery tray to the firewall.
 - B-9 Wire the plug as shown in Figure 3. The MS25171-3S nipple should be installed so that it covers the positive terminal on the AN2552-3A receptical.
- C. Return aircraft to flight status.
- D. Record modification in the aircraft logbook.
- E. Please fill in the attached accessory kit completion card and return it to:
American General Aircraft Corp.
P.O. Box 5757
Greenville, MS 38703

FAA (DER) Approval of this Accessory Kit has been granted.

BLR 19.312 REF

BLR 11.849 REF



EP37A6 WIRE TO POSITIVE/JUMPER SIDE OF BATTERY SOLENOID

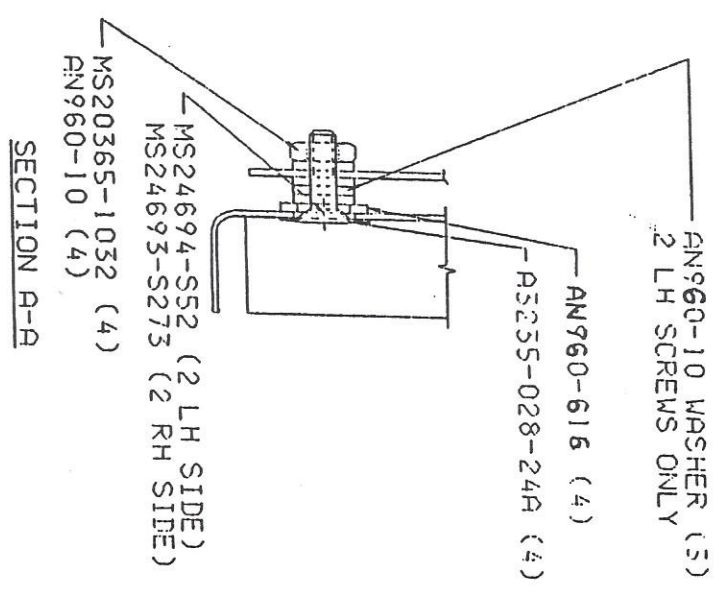


FIGURE 1

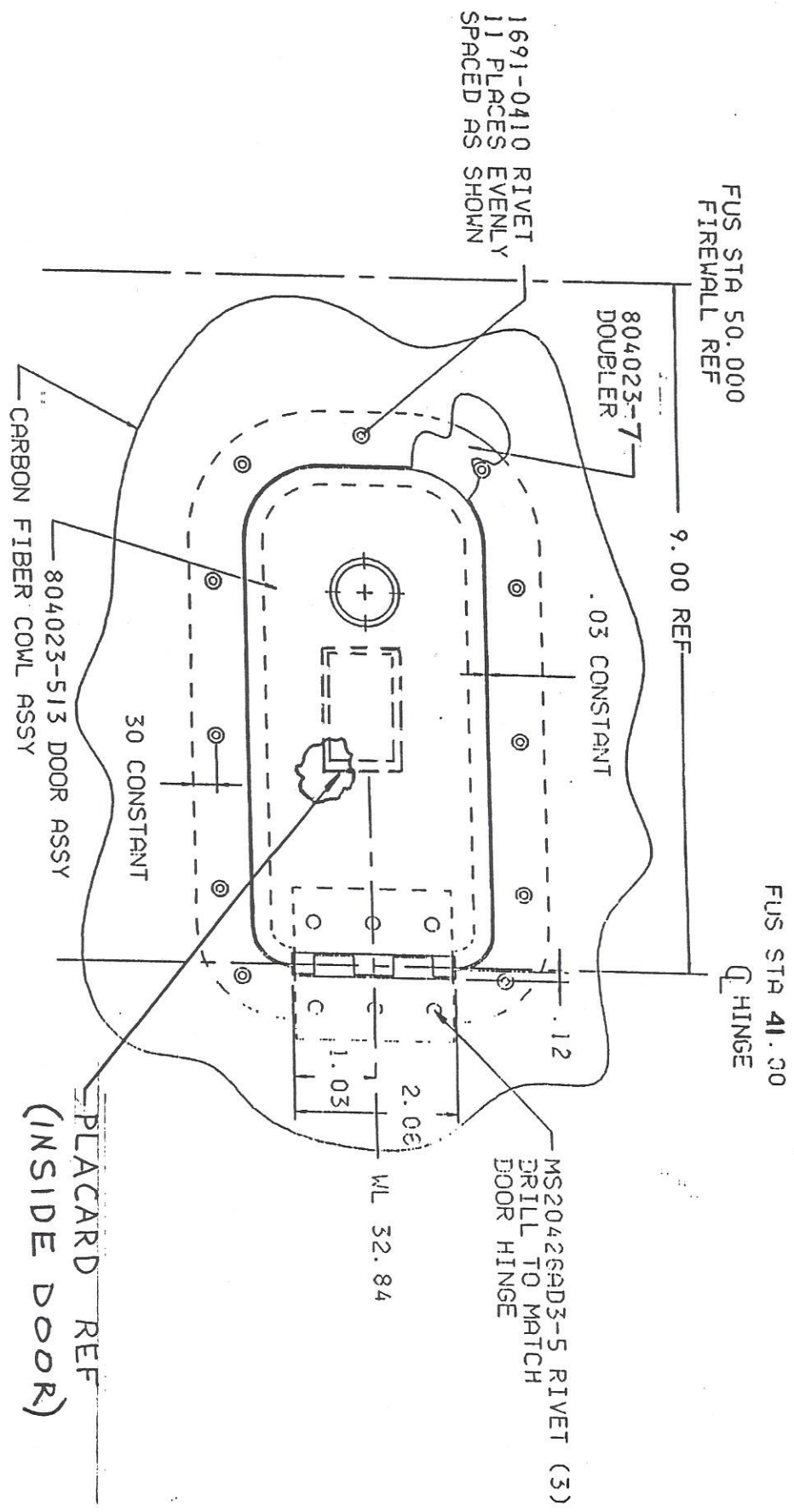


FIGURE 2

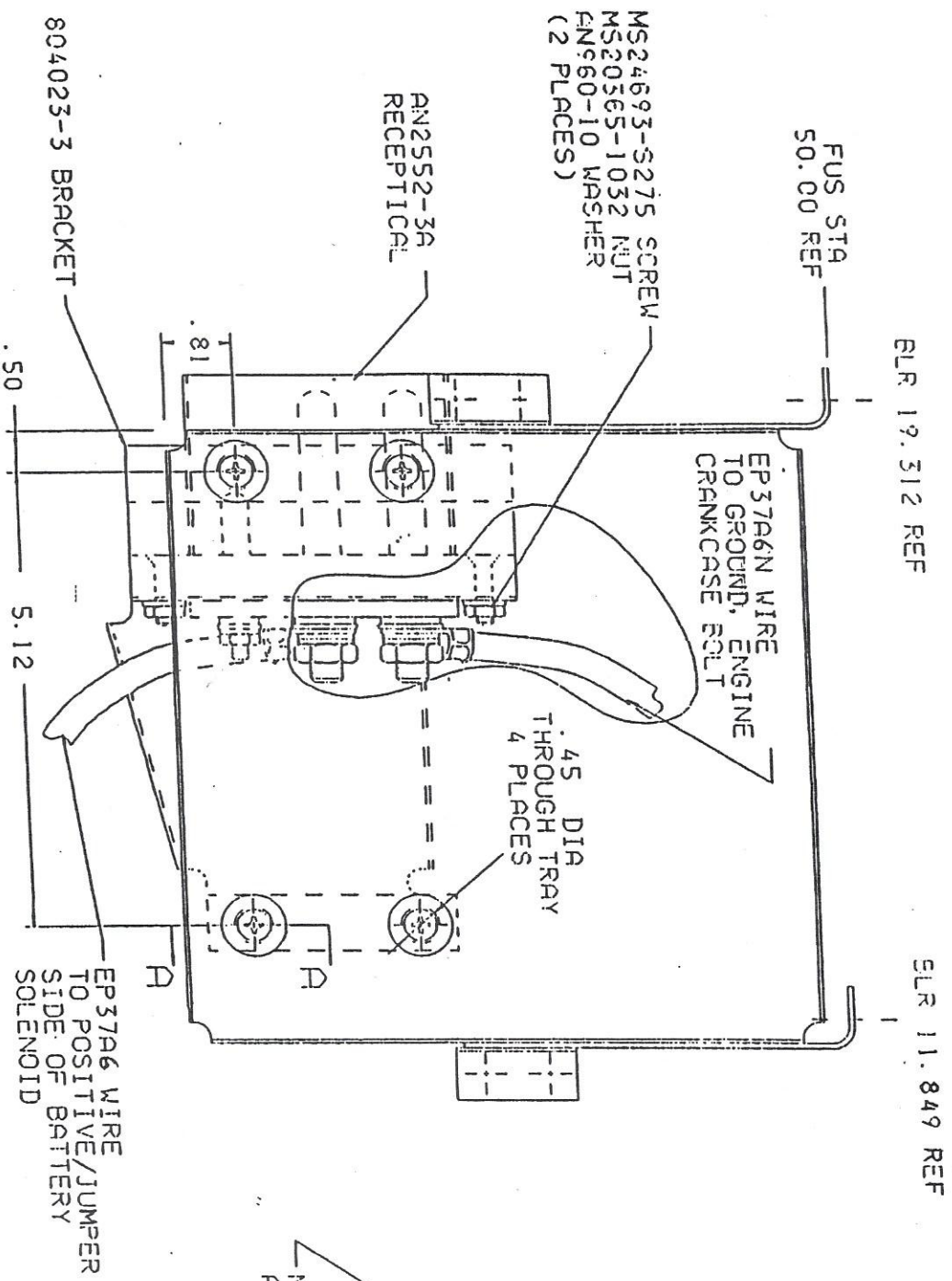


FIGURE 3

